

M39012/25-0021

NOTES:

1. MATING:

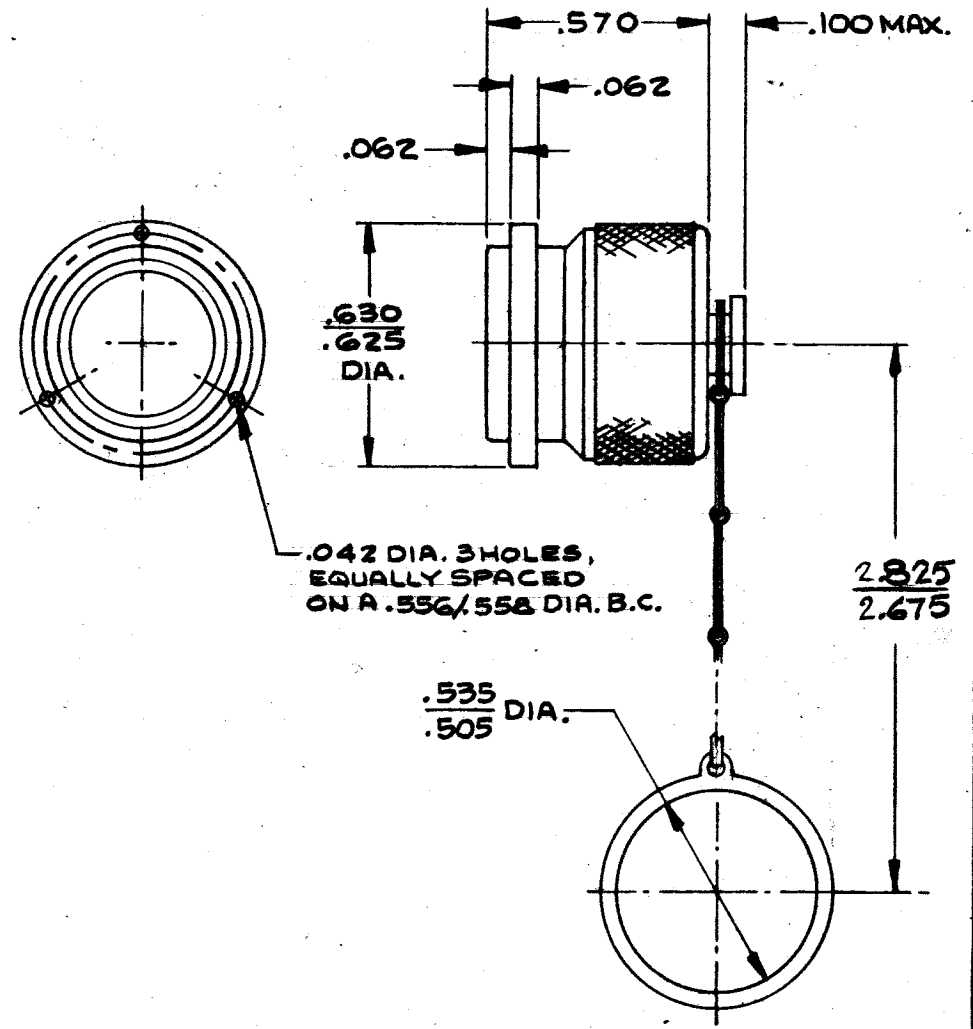
Interface dimension per Mil-C-39012/TNC Series
And Solitron/Microwave MD-108.

2. MATERIALS:

- Body, Coupling Nut and Rivet: _____ Brass 1/2H per QQ-B-626, Alloy 360.
Chain: _____ 300 Series Stainless Steel.
Lock Ring: _____ Phosphor Bronze per ASTM-159, Alloy 51000, Temp. -H08.
Gasket: _____ Silicone Rubber per ZZ-R-765, Class IIB, Grade 50-60.

3. FINISH:

- Body, Coupling Nut and Rivet: _____ Silver per QQ-S-365, Type II, Grade A with Irridite
_____ Stainless Steel per MIL-C-12800.



SYMBOL	DESCRIPTION	DATE	APPR.	UNLESS OTHERWISE SPECIFIED 1. REMOVE ALL BURRS 2. BREAK ALL CORNERS & EDGES .005 R MAX. 3. CHAMFER 1ST & LAST THREADS 45° 4. SURFACE ROUGHNESS 63 ✓ MIL-STD-10 5. DIAMETERS ON COMMON CENTERS TO BE CONCENTRIC WITHIN T.I.R. 6. ALL DIMENSIONS ARE AFTER PLATING	SOLITRON/MICROWAVE PORT SALERNO, FLORIDA	REF.	ENGINEERING DATA DRAWING
-	REL.DCN F-102A6	2/86	D			MATERIAL	TITLE
				DIMENSIONS ARE IN INCHES TOLERANCES DECIMALS FRACTIONAL ANGULAR .X ± .030 .XX ± .015 ± 1/64 X° ± 1°0' .XXX ± .005 X'X ± 15'	FINISH		
				DRAWN R.P.A. DATE 12-10-85	SCALE	CODE IDENT. NO.	DRAWING NO.
				CHECKED DATE	-	95077	M39012/25-0021
				APPROVED D DATE 2-8-86		A	SHEET 1 OF 1